

## COMPOSITE SITE PLAN LEGEND

- KNOX BOX
- ACCESSIBLE ROUTE:  
1. NO ABRUPT CHANGES IN ELEVATIONS ALONG PATH OF TRAVEL SHOWN. SLOPE IN DIRECTION OF TRAVEL SHALL NOT EXCEED 2% UNLESS A RAMP IS PROVIDED. CROSS SLOPE ALONG THE PATH OF TRAVEL SHALL NOT EXCEED 2% WHERE PROVIDED. RAMPS SHALL COMPLY WITH CBC/ADA AND SHALL BE PROVIDED WITH HANDRAILS AND EDGE PROTECTION AS REQUIRED BY CBC.
2. SEE ADDITIONAL NOTES INCLUDING BUT NOT LIMITED TO "SITE DEVELOPMENT & ACCESSIBLE ROUTE OF TRAVEL," "WALKS AND SIDEWALKS," "CURB RAMPS," "RAMPS (INTERIOR AND EXTERIOR)," AND "HAZARDOUS ON ACCESSIBLE ROUTES" ON SHEET.
3. SEE CIVIL DOCUMENTS FOR GRADES AND SLOPES
4. ALL SIDEWALKS ALONG ACC. ROUTE SHALL BE 48" WIDE MIN. IN CLEAR WIDTH (SEE CIVIL)
5. INSPECTOR TO VERIFY ACCESSIBLE ROUTE
- COMMUNICATION FEATURES UNITS, INDICATES 10% OF TOTAL UNITS PER CBC 11B-233.1.1 FOR UNITS W/ COMMUNICATION FEATURES. UNITS DESIGNATED FOR AUDIBLY & VISUALLY IMPAIRED RESIDENTS MUST HAVE BLD ALARM SYSTEM EXTENDED INTO LIVING ROOM & SLEEPING AREAS & MUST BE EQUIPPED W/ A STROBE, STROBE DOORBELL, ALSO REQ'D. SEE CBC 11B-409.5 ON SHEET A0.20a FOR REQUIREMENTS. REFER TO COMPOSITES FOR UNIT DESIGNATIONS.
- MOBILITY FEATURE UNITS, INDICATES 15% OF TOTAL UNITS PER CBC 11B-233.1.1 FOR MOBILITY FEATURE UNITS.
- TRANSFORMER - SEE CIVIL DRAWINGS

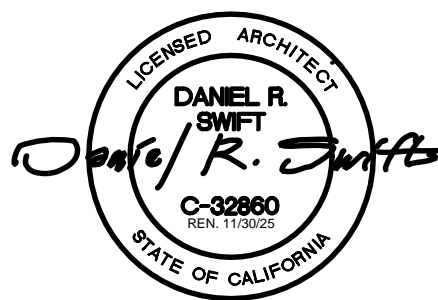
## FIRE ACCESS LEGEND

- FIRE HYDRANT LOCATION
- FIRE DEPARTMENT PERSONNEL ACCESS POINT
- STANDPIPE CONNECTIONS
- TRAFFIC DIRECTION
- PARKING SPACE COUNT

APN 061-390-027

## GENERAL SITE NOTES

- THIS ARCHITECTURAL SITE PLAN IS TO BE USED FOR GENERAL INFORMATION, BUILDING IDENTIFICATION, AND RELATIVE POSITIONING OF THE BUILDINGS ONLY. FOR PRECISE SITE DOCUMENTATION INCLUDING, BUT NOT LIMITED TO: GEOMETRY, GRADING, UTILITIES, WATER, SEWER, DRAINAGE, AND ADA SITE ACCESSIBILITY, REFER TO PLANS BY CIVIL ENGINEER, PERMITS ON SUCH PORTION OF WORK TO BE SUBMITTED SEPARATELY.
- COORDINATE WITH ALL ELECTRICAL, PLUMBING, AND MECHANICAL ENGINEERING DOCUMENTS AFFECTING CONSTRUCTION PRIOR TO FABRICATION, PURCHASE, OR INSTALLATION OF ANY EQUIPMENT.
- SEE CIVIL DRAWINGS FOR SITE ACCESSIBILITY REQUIREMENTS.
- RETAINING WALLS OVER 30" IN HEIGHT WILL HAVE 42" GUARDRAILS WITH RAIL SPACING OF LESS THAN 4" CLEAR.
- PROVIDE SIGNAGE FOR USE BY FIRE DEPARTMENT INDICATING SPRINKLER EQUIPMENT ROOM AND FIRE PROTECTION EQUIPMENT COMPONENTS. SPRINKLER EQUIPMENT ROOM DOOR ASSEMBLIES SHALL BE PROVIDED WITH A SIGN CONFORMING TO THE REQUIREMENTS OF NFPA-13 WHICH SHALL BE AT LEAST 4" IN HEIGHT AND SHALL READ "SPRINKLER CONTROL VALVES" G.C. TO PROVIDE SHOP DRAWING SUBMITTAL TO ARCHITECT FOR APPROVAL, PRIOR TO FABRICATION.
- ALL SITE WORK AND LANDSCAPING IS TO BE ESTABLISHED AND DESIGNED BY CIVIL ENGINEER AND LANDSCAPE ARCHITECT.
- REFER TO CIVIL DRAWINGS FOR DIMENSIONAL CONTROL PLAN AND GRADING.
- REFER TO CIVIL DRAWINGS FOR FIRE HYDRANT LOCATIONS.
- REFER TO CIVIL AND ELECTRICAL DRAWINGS FOR TRANSFORMER LOCATIONS (TO BE VERIFIED WITH LOCAL UTILITY SERVICE).
- REFER TO CIVIL DRAWINGS FOR BUILDING ELEVATIONS, CURB CUTS, AND SIDEWALK INFORMATION.
- PROVIDE BELOW-GRADE WATERPROOFING SYSTEM INSTALLED AT EXTERIOR WALLS SUBJECT TO HYDROSTATIC PRESSURE DUE TO INTERIOR ENVIRONMENT LOCATED BELOW EXTERIOR GRADE. SYSTEM TO BE INSTALLED CONTINUOUSLY OVER CONCRETE FOOTINGS BASED ON ACTUAL SYSTEM USED.
- ALL EXISTING WORK OR LANDSCAPING NOT SHOWN TO BE ALTERED OR REMOVED SHALL BE PROTECTED FROM DAMAGE DURING CONSTRUCTION. THE CONTRACTOR SHALL BEAR THE TOTAL EXPENSE FOR AND SHALL REPAIR TO EXISTING CONDITION, ANY DAMAGE TO EXISTING CONSTRUCTION, EQUIPMENT, OR IMPROVEMENTS NOT INDICATED IN THE DRAWINGS OR SPECIFICATIONS TO RECEIVE ALTERATIONS, ADDITIONS, OR REMOVAL. THE CONTRACTOR SHALL BEAR THE TOTAL EXPENSE FOR AND SHALL REPAIR TO EXISTING CONDITION ANY DAMAGE TO EXISTING UNDERGROUND UTILITIES, PIPING, CONDUIT, OR EQUIPMENT.



ISSUE DATE: 12/12/2024

REVISIONS

1 12-12-2024 PERMIT REVISIONS

Reviewed for Code Compliance  
January 09 2025  
CSG CONSULTANTS, INC.

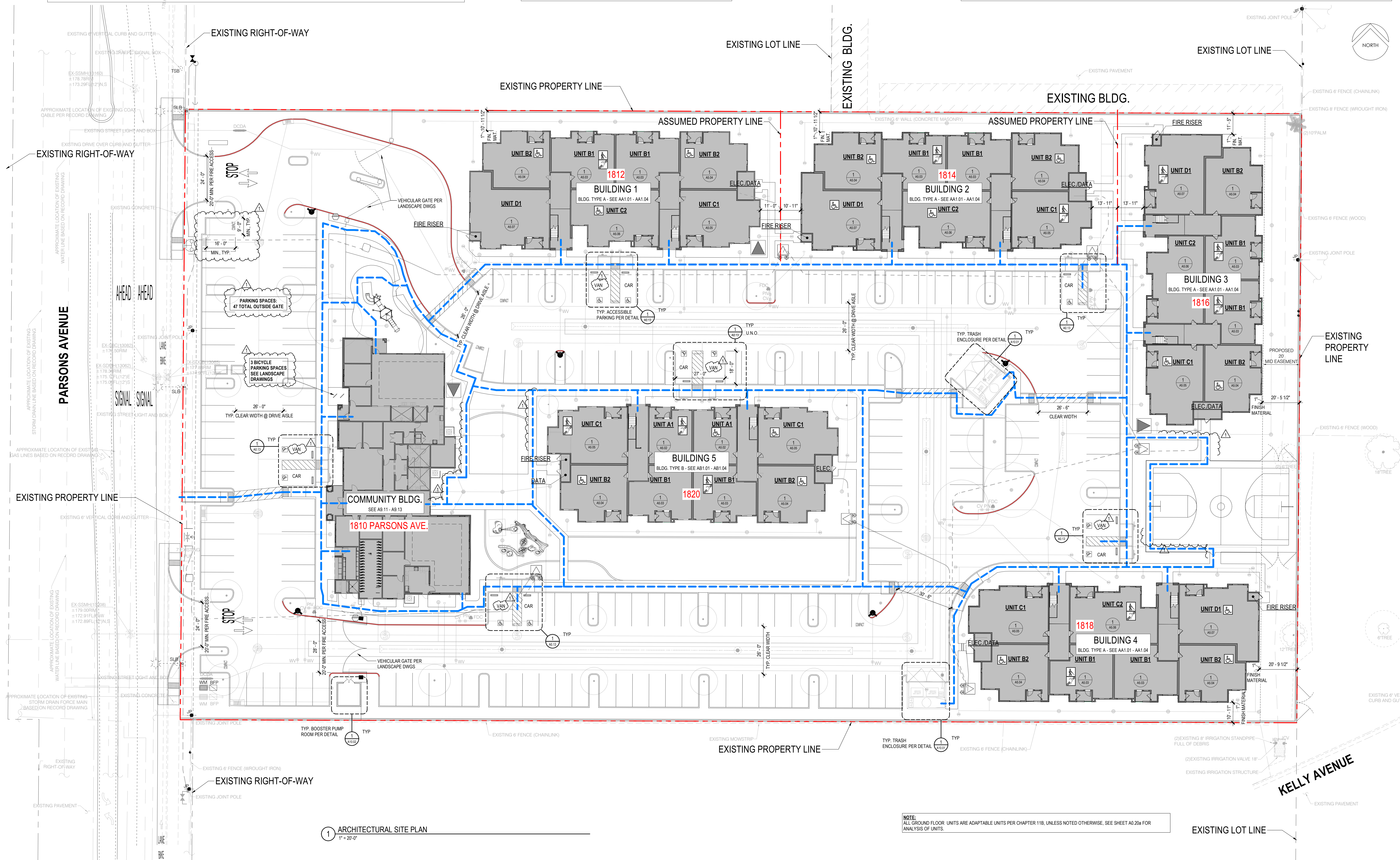
JOB COPY  
City of Merced  
Inspection Services

BELLA VISTA APARTMENTS  
1808 PARSONS AVE, MERCED, CALIFORNIA 95341

18000 MacArthur Boulevard, Suite 200  
Irvine, California 92617  
949.555.1420JOB NO. 24-0308  
DRAWN: BSB  
PROJ. MGR. DR.ARCHITECTURAL SITE  
PLAN

12/12/2024 - ISSUED FOR PERMIT REVIEW PC2

A0.02

1 ARCHITECTURAL SITE PLAN  
1" = 20'-0"NOTE:  
ALL GROUND FLOOR UNITS ARE ADAPTABLE UNITS PER CHAPTER 11B, UNLESS NOTED OTHERWISE. SEE SHEET A0.20a FOR ANALYSIS OF UNITS.